

RESEARCH

Open Access



Socio-demographic factors, housing characteristics, and clinical symptoms associated with falciparum malaria in two rapidly urbanizing areas in the Ashanti region of Ghana

Stephen Opoku Afriyie¹, Kwasi Baako Antwi¹, Abdul-Hakim Mutala¹, Dawood Ackom Abbas¹, Kofi Agyapong Addo¹, Austine Tweneboah¹, Thomas Kwame Addison¹, Eric Osei², Cristian Koepfli³ and Kingsley Badu^{1*}

Abstract

Background Malaria has been described as a disease of poverty, affecting the poorest populations typically living in rural areas. As hitherto rural areas transition into semi-urban environments, this study investigated the prevalence of falciparum malaria and associated risk factors in two rapidly urbanizing districts in the Ashanti Region of Ghana.

Methods A cross-sectional, hospital-based study was conducted at Agona and Mankranso Government Hospitals located within the Sekyere South and Ahafo Ano Southwest districts respectively, in the Ashanti Region of Ghana. Five μ L of venous blood was obtained from suspected malaria patients and tested for malaria using rapid diagnostic test (RDT). Data on socio-demographic factors, clinical symptoms, and housing characteristics were collected using a structured questionnaire. Univariate and multivariate logistic regression analysis were performed to identify risk factors associated with malaria.

Results A total of 1739 participants were enrolled in the study between January and June 2021 with median age of 22 years (IQR = 6–36). Overall malaria prevalence was 24.8%. Compared to > 30-year-olds, children between 0 and 5 years (aOR = 3.36) and those aged between 6 and 14 (aOR = 6.71) were three and six times more likely to test positive for malaria, respectively. Similarly, farming (aOR = 1.74), compared to other occupations, living close to stagnant water (aOR = 1.34), experiencing chills (aOR = 1.5), and vomiting (aOR = 1.93) were associated with increased odds of malaria infection. Having roofing ceiling (aOR = 0.66) and screened doors (aOR = 0.75) were associated with decreased risk of malaria. However, sleeping under insecticide-treated nets (ITNs), using mosquito coils/repellents, and indoor residual spraying (IRS) were not statistically significantly associated with infection.

Conclusion Children between 0 and 5 years and those aged between 6 and 14 years continue to shoulder the highest burden of malaria. Efforts to improve housing characteristics such as installation of roofing ceiling, screening doors, and clearing potential mosquito breeding sites should be encouraged in these rapidly urbanizing areas.

Keywords Malaria, Risk factors, Housing characteristics, Socio-demographic factors

*Correspondence:

Kingsley Badu

kingsbadu@gmail.com

Full list of author information is available at the end of the article



© The Author(s) 2024. **Open Access** This article is licensed under a Creative Commons Attribution-NonCommercial-NoDerivatives 4.0 International License, which permits any non-commercial use, sharing, distribution and reproduction in any medium or format, as long as you give appropriate credit to the original author(s) and the source, provide a link to the Creative Commons licence, and indicate if you modified the licensed material. You do not have permission under this licence to share adapted material derived from this article or parts of it. The images or other third party material in this article are included in the article's Creative Commons licence, unless indicated otherwise in a credit line to the material. If material is not included in the article's Creative Commons licence and your intended use is not permitted by statutory regulation or exceeds the permitted use, you will need to obtain permission directly from the copyright holder. To view a copy of this licence, visit <http://creativecommons.org/licenses/by-nc-nd/4.0/>.

Background

Malaria remains a major public health concern, particularly in sub-Saharan Africa, where more than 94% of global cases and deaths occur annually [1]. In Ghana and across West Africa, the disease consistently ranks among the leading causes of hospital admissions with the entire population at risk [2, 3]. Malaria transmission in Ghana is however heterogeneous—with pockets of high transmission affecting the poorest populations typically living in rural areas [4, 5].

Over the past two decades, Ghana's urban population has more than doubled, rising from 8 to 17 million owing to increased population growth and migration [6, 7]. Within the same period, malaria incidence has declined from 431 to 164 cases per 1000 population at risk with decreasing case fatality rates [8]. These gains have been largely attributed to increased coverage of malaria preventive measures, such as insecticide-treated nets (ITNs), indoor residual spraying (IRS), seasonal malaria chemoprevention (SMC), and intermittent preventive treatment in pregnant women (IPTp) adopted by the National Malaria Elimination Programme in Ghana [5].

Aside from these measures, the declining malaria burden over the past two decades may be explained by the country's changing urbanization landscape, as more rural areas transition into semi-urban environments. According to the 2021 Population and Housing Census, 7 out of the 16 regions have more than half of its inhabitants living in urban areas [7]. Until recently, urbanization was thought to reduce malaria transmission due to improved housing and living conditions, and increased access to quality healthcare. However, when unplanned, rapid urbanization may lead to high malaria transmission due to overcrowding and resultant increase in pollution and unhygienic living conditions [9, 10].

This study sought to investigate the prevalence of falciparum malaria among febrile patients living in urban and peri-urban areas of two rapidly urbanizing districts (*i.e.*, Sekyere South and Ahafo Ano South West) in the Ashanti Region of Ghana, highlighting multiple sociodemographic factors, housing characteristics, and clinical symptoms associated with perennial disease transmission in these areas.

Methods

Study area

The current study was conducted at Agona Government Hospital (AGH) and Mankranso Government Hospital (MGH), both located in the Ashanti Region of Ghana (Fig. 1). AGH is situated in Agona, the capital of the Sekyere South District, and located about 45 km away from the regional capital, Kumasi. AGH serves as the referral health facility for the district and surrounding

towns and villages. In the past decade (2010–2021), the urban population of the district has risen from 53 to 73% [7, 11]. Notwithstanding, agriculture is the predominant economic activity in the district and employs about 45% of the active population. The district experiences an average temperature of 27 °C and mean annual precipitation falls within 855–1500 mm [11]. Malaria is the most prevalent disease in the district and transmission is year-round [12].

MGH is situated in Mankranso, the capital of the Ahafo Ano South-West District in north-western part of the Ashanti Region where it serves as the main referral facility for surrounding towns and villages. The majority of the inhabitants reside in rural areas, though the urban population has risen from 10% to 23.2% in the last decade [7, 13]. The district's economy is largely agrarian and employs about 75% of the active population. The mean annual rainfall in the district ranges between 1500 and 1700 mm with average monthly temperature of 26 °C [13]. Malaria transmission is year-round and routinely tested at all health facilities within the district.

Study design

This was a cross-sectional hospital-based study, carried out between January and June 2021 to enroll suspected malaria patients seeking healthcare at AGH and MGH. Specifically, individuals of all ages and sex who were referred to the laboratory to test for malaria by clinicians were enrolled in the study after obtaining informed consent. Enrolled participants were interviewed to collect demographic, housing, and clinical information followed by malaria diagnosis using rapid diagnostic test.

Sample size

The minimum sample size for the study was computed using Cochran's formula for categorical data as previously described [14]. The final sample size was calculated using a previous malaria prevalence of 24.5% [15] assuming a 95% confidence interval and 5% acceptable margin of error. After substituting in the variables, a minimum sample size of 285 was required for the present study.

Data collection

A well-structured, paper-based questionnaire was administered to collect data of the study participants by trained research assistants at the hospital premises. The questionnaire was stratified into 4 main themes: sociodemographic factors, housing characteristics, clinical symptoms, and malaria preventive measures (Fig. 2). The questionnaire was administered in vernacular (Asante Twi) and occasionally in English or other dialect as preferred by the study participants.

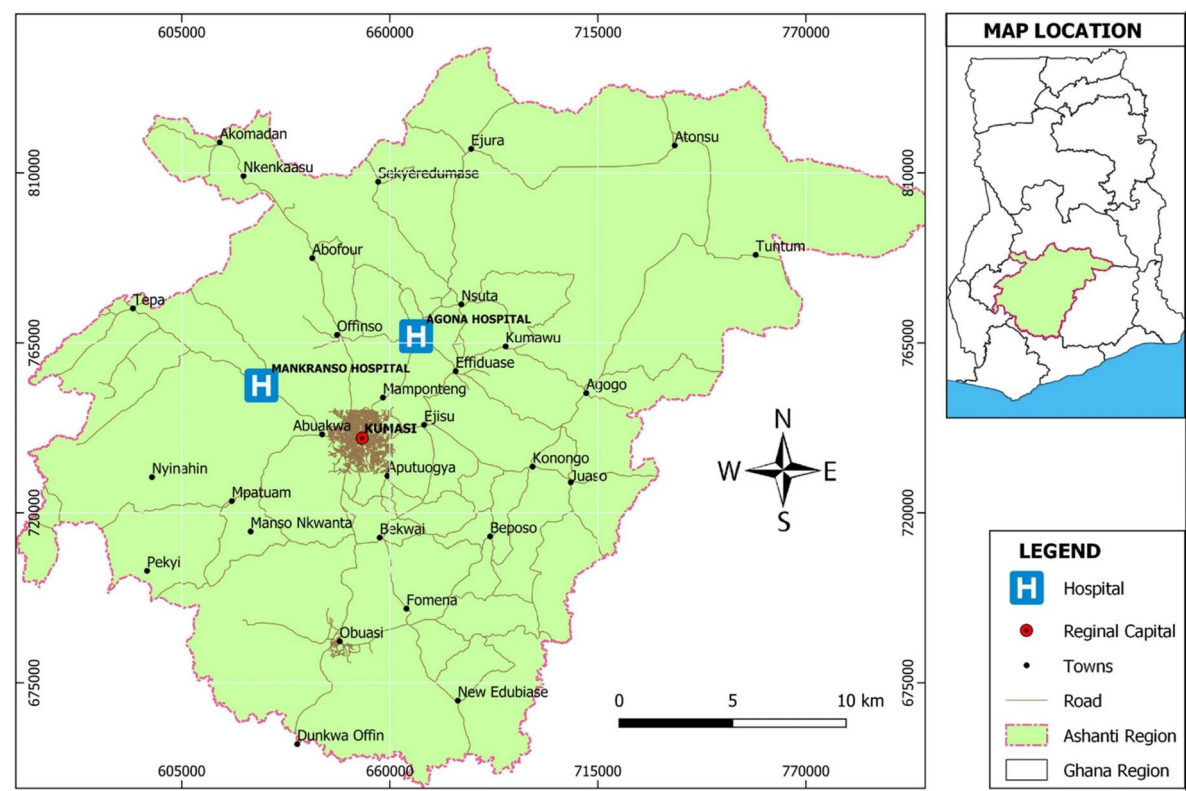


Fig. 1 A map showing the study areas

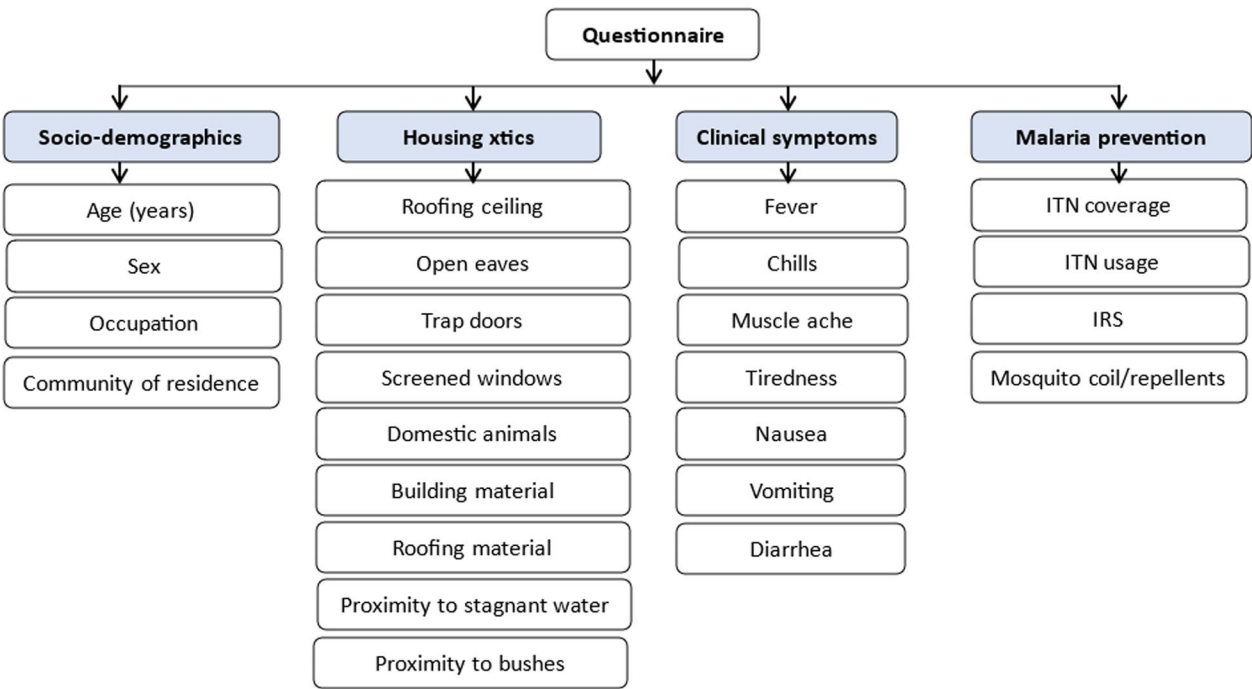


Fig. 2 Summary of data obtained from questionnaire

Malaria diagnosis

Participants were tested for falciparum malaria using the CareStart™ Malaria Pf (HRP2) Ag RDT (AccessBio, USA) kit. This rapid diagnostic test (RDT) was preferred over microscopy due to previous studies which reported superior sensitivity of RDT at the study area [15]. RDT diagnosis was performed on-site using 5 µL of venous blood collected by trained phlebotomists into EDTA tubes. Rapid diagnostic testing was carried out and interpreted according to manufacturer's instructions. Test results were recorded after 20 min. RDTs that showed faint pink/red lines were repeated.

Data analysis

Data entry and cleaning were performed using Microsoft Excel 2016 (Microsoft Corp., Redmond, WA, USA), and then exported into STATA 14 (StataCorp, College Station, TX, USA) for statistical analysis. Data were coded and presented as frequencies and percentages. Age was summarized as median (interquartile range) and then converted into categorical data as age groups (0–5, 6–14, 15–30 and >30 years). Association between falciparum malaria and sociodemographic factors, housing characteristics, clinical symptoms, and malaria preventive measures were computed using univariate logistic regression analysis. Significant variables from the univariate analysis were included for multivariate analysis to obtain adjusted odds ratio (aOR). Statistical significance was set at $p < 0.05$ and a 95% confidence interval in all the models.

Ethics

The study was approved by the Committee on Human Research, Publications and Ethics (Approval number: CHRPE/AP/030/20) of the School of Medicine and Dentistry, KNUST and University of Notre Dame Institutional Review Board (approvals no. 19-08-5511, 19-04-5321). The protocol and purpose of the study was communicated in layman terms to all participants. Written informed consent was obtained from patients who were 18 years or older. Parental/guardian consent and child assent were obtained for those under 18 years. Participants who did not meet the inclusion criteria and those who could not provide informed consent were excluded from the study. Participants were de-identified using unique codes. No adverse events were encountered during the study.

Results

Population characteristics

A total of 1739 participants—992 (57.0%) from AGH and 747 (43.0%) from MGH—were enrolled in the

study. Malaria prevalence was not significantly different ($p = 0.61$) across the sites; neither was site a significant determinant of malaria infection in the regression models. Therefore, data from both sites were combined for all subsequent analysis. Participants' age ranged from 1 to 96 years with a median age of 22 (IQR = 6–36). More than twice as many females ($n = 1217$, 70.0%) than males ($n = 522$, 30.0%) were enrolled. The majority of participants fell within the 15–30 age group ($n = 596$, 34.3%) closely followed by the >30 ($n = 560$, 32.2%), 0–5 ($n = 409$, 23.5%) and the 6–14 ($n = 174$, 10.0%) age groups. Almost a third of the study populace were students/apprentices ($n = 533$, 30.6%), 253 (14.5%) were traders, 231 (13.3%) were engaged in farming, 198 (11.4%) were unemployed while 98 (5.6%) represented civil servants. Most of the participants owned ITNs ($n = 1244$, 71.5%) but less than half ($n = 816$, 46.9%) reported sleeping under the nets the night before enrolment. A third of the participants ($n = 580$, 33.4%) used mosquito coil/repellents while 458 (26.3%) reported recent participation in IRS campaigns (Table 1).

Association between sociodemographic factors and malaria

Of the 1739 patients examined, 432 (24.8%) tested positive for malaria. In the univariate logistic regression model, the odds of malaria infection were significantly high among males [OR = 1.51, 95% CI 1.20–1.90, $p < 0.001$] and students/apprentices [OR = 1.63, 95% CI 1.22–2.17, $p = 0.001$] compared to “other” occupation. Similarly, respondents between 0 and 5 years [OR = 3.25, 95% CI 2.36–4.48, $p < 0.001$], 6–14 years [OR = 7.84, 95% CI 5.33–11.54, $p < 0.001$] and 15–30 years [OR = 1.88, 95% CI 1.37–2.57, $p < 0.001$] were at high risk of malaria infection compared to the >30 age group. Conversely, civil servants [OR = 0.48, 95% CI 0.26–0.90, $p = 0.023$] and traders [OR = 0.56, 95% CI 0.37–0.84, $p < 0.001$] had lower odds of malaria infection. After adjusting for possible confounders in a multivariate logistic regression model, children between 0 and 5 years [aOR = 3.36, 95% CI 2.09–5.42, $p < 0.001$], school age children (*i.e.*, 6–14 year olds) [aOR = 6.71, 95% CI 3.95–11.4, $p < 0.001$], 15–30 year olds [aOR = 1.85, 95% CI 1.26–2.72, $p = 0.002$], and farmers [aOR = 1.74, 95% CI 1.06–2.87, $p = 0.029$] were more likely to test positive for malaria. None of the malaria preventive measures assessed in the study (*i.e.*, ITN ownership/usage, recent IRS participation and using mosquito coils/repellents) was statistically significantly associated with malaria infection (Table 2).

Table 1 Socio-demographic characteristics and malaria preventive practices of the study population

Variable	Total (%)	RDT-positive (%)
Site		
AGH	992 (57.0)	251 (25.3)
MGH	747 (43.0)	181 (24.2)
Sex		
Male	522 (30.0)	160 (30.7)
Female	1217 (70.0)	272 (22.4)
Age group (years)		
0–5	409 (23.5)	134 (32.8)
6–14	174 (10.0)	94 (54.0)
15–30	596 (34.3)	131 (22.0)
> 30	560 (32.2)	73 (13.0)
Occupation		
Farming	231 (13.3)	52 (22.5)
Trading	253 (14.5)	38 (15.0)
Civil servant	98 (5.6)	13 (13.3)
Student/Apprentice	533 (30.6)	181 (34.0)
Unemployed	198 (11.4)	42 (21.2)
Other	426 (24.5)	106 (24.9)
ITN ownership		
Yes	1244 (71.5)	299 (24.0)
No	495 (28.5)	133 (26.9)
ITN usage		
Yes	816 (46.9)	204 (25.0)
No	923 (53.1)	228 (24.7)
IRS		
Yes	458 (26.3)	99 (21.6)
No	1281 (73.7)	333 (26.0)
Used mosquito coil/repellent		
Yes	580 (33.4)	157 (27.1)
No	1159 (66.6)	275 (23.7)

Housing characteristics

The majority of the participants resided in houses built with cement or blocks ($n=1155$, 66.4%) while a minority stayed in houses made of bricks ($n=313$, 18.0%) and mud ($n=271$, 15.6%). Almost all the respondents lived in houses roofed with galvanized sheet ($n=1699$, $n=99.0\%$) except 17 (1.0%) who slept under thatched roof. Most of the study populace slept in rooms with roofing ceiling ($n=1444$, 83.0%), screened windows ($n=1336$, 76.8%) and doors ($n=1097$, 63.1%). A quarter of the participants reported living near stagnant water ($n=431$, 24.8%), having open eaves ($n=429$, 24.7%), and reared livestock ($n=421$, 24.2%) in their households. Half of the respondents reported living near bushes ($n=871$, $n=50.1\%$) (Table 3).

Table 2 Socio-demographic factors and malaria preventive practices associated with malaria infection among the study population

Variable	Unadjusted OR (95% CI)		Adjusted OR (95% CI)	
	Odds Ratio	p-value	Odds Ratio	p-value
Site				
AGH	1.06 (0.85–1.32)	0.609		
MGH	Ref.	–		
Sex				
Male	1.51 (1.20–1.90)	0.000	1.14 (0.86–1.50)	0.357
Female	Ref.	–	–	–
Age group (years)				
0–5	3.25 (2.36–4.48)	0.000	3.36 (2.09–5.42)	0.000
6–14	7.84 (5.33–11.54)	0.000	6.71 (3.95–11.4)	0.000
15–30	1.88 (1.37–2.57)	0.000	1.85 (1.26–2.72)	0.002
> 30	Ref.	–	–	–
Occupation				
Farming	0.92 (0.63–1.35)	0.663	1.74 (1.06–2.87)	0.029
Trading	0.56 (0.37–0.84)	0.006	1.29 (0.78–2.12)	0.326
Civil servant	0.48 (0.26–0.90)	0.023	1.08 (0.54–2.16)	0.826
Student/Apprentice	1.63 (1.22–2.17)	0.001	1.41 (0.97–2.05)	0.075
Unemployed	0.85 (0.57–1.28)	0.44	1.42 (0.88–2.29)	0.157
Other	Ref.	–	–	–
ITN ownership				
Yes	0.86 (0.68–1.09)	0.217		
No	Ref.	–		
ITN usage				
Yes	1.02 (0.82–1.26)	0.886		
No	Ref.	–		
IRS				
Yes	0.79 (0.61–1.01)	0.063		
No	Ref.	–		
Used mosquito coil/repellent				
Yes	1.19 (0.95–1.50)	0.129		
No	Ref.	–		

Bold indicates a statistically significant variable

*Ref-Reference

Association between housing characteristics and malaria

An explorative univariate analysis revealed that apart from roofing material, all the housing characteristics assessed in the study were significantly associated ($p<0.05$) with malaria (Table 4). In the univariate logistic regression model, households with open eaves [OR=1.48, 95% CI 1.16–1.89, $p=0.002$], those who reared livestock [OR=1.43, 95% CI 1.12–1.83, $p=0.004$], houses built with mud [OR=1.46, 95% CI 1.09–1.96, $p=0.011$] and those situated near stagnant water [OR=1.46, 95% CI 1.14–1.86, $p=0.002$] or bushes

Table 3 Housing characteristics of the study population

Housing characteristics	Total (%)	RDT-positive (%)
Roofing Ceiling		
Yes	1444 (83.0)	332 (23.0)
No	295 (17.0)	100 (33.9)
Open eaves		
Yes	429 (24.7)	130 (30.3)
No	1310 (75.3)	302 (23.1)
Screened doors		
Yes	1097 (63.1)	242 (22.1)
No	642 (36.9)	190 (29.6)
Screened windows		
Yes	1336 (76.8)	304 (22.8)
No	403 (23.2)	128 (31.8)
Domestic animals in household		
Yes	421 (24.2)	127 (30.2)
No	1318 (75.8)	305 (23.1)
Building material		
Mud	271 (15.6)	82 (30.3)
Bricks	313 (18.0)	86 (27.5)
Cement blocks	1155 (66.4)	264 (22.9)
Roofing Material		
Galvanized roofing sheet	1699 (99.0)	420 (24.7)
Thatch roof	17 (1.0)	6 (35.3)
Staying close to stagnant waters		
Yes	431 (24.8)	131 (30.4)
No	1308 (75.2)	301 (23.0)
Staying close to bushes		
Yes	871 (50.1)	237 (27.2)
No	868 (49.9)	195 (22.5)

[OR=1.29, 95% CI 1.04–1.60, $p=0.022$] were associated with increased risk of malaria infection. Alternatively, households with roofing ceiling [OR=0.58, 95% CI 0.44–0.76, $p=0.000$], screened doors [OR=0.67, 95% CI 0.54–0.84, $p<0.001$] and windows [OR=0.63, 95% CI 0.50–0.81, $p<0.001$] were less susceptible to malaria infection. After controlling for other variables in a multivariate logistic regression model, households with roofing ceiling [aOR=0.66, 95% CI 0.44–0.99, $p=0.042$] and screened doors [aOR=0.75, 95% CI 0.57–0.97, $p=0.032$] were less likely to be infected with malaria while those situated close to stagnant water [aOR=1.34, 95% CI 1.02–1.77, $p=0.038$] were more susceptible to malaria infection.

Clinical symptoms associated with malaria

Of the malaria symptoms assessed in the study, diarrhea ($n=196$, 11.3%) was the least reported. The majority of the participants experienced a history of fever ($n=1140$, 65.6%), followed by chills ($n=699$, 40.2%), tiredness

($n=663$, 38.1%) and muscle aches ($n=637$, 36.6%). Other clinical manifestations such as nausea ($n=604$, 34.7%) and vomiting ($n=415$, 23.9%) were reported by a third and quarter of the respondents respectively (Table 5).

In the univariate analysis, all the symptoms assessed in the study were significantly associated with malaria except for diarrhea. According to the model, patients who presented with a history of fever [OR=2.19, 95% CI 1.70–2.82, $p<0.001$], chills [OR=1.73, 95% CI 1.39–2.15, $p<0.001$], nausea [OR=1.34, 95% CI 1.07–1.67, $p=0.011$] and vomiting [OR=2.57, 95% CI 2.03–3.27, $p<0.001$] were more likely to have been infected with malaria. Conversely, clinical symptoms such as muscle aches [OR=0.78, 95% CI 0.62–0.98, $p=0.036$] and tiredness [OR=0.72, 95% CI 0.57–0.90, $p=0.005$] were significantly associated with decreased odds of malaria infection. In the multivariate logistic regression model, symptoms such as fever, nausea, muscle ache and tiredness were no longer significant ($p>0.005$) while chills [aOR=1.50, 95% CI 1.15–1.96, $p=0.003$] and vomiting [aOR=1.93, 95% CI 1.43–2.60, $p=0.000$] remained independently associated with malaria infection (Table 6).

Discussion

The intensity of malaria transmission in a given area is influenced by multiple factors that may increase or decrease chances of infection. The overall prevalence of falciparum malaria among febrile patients in the study was 24.8%, which is higher than previously reported using microscopy [15] but lower when compared to studies where PCR was used as the tool for diagnosis [15, 16]. In this study, sociodemographic factors such as age and occupation were significantly associated with increased risk of infection. Children between 0 and 5 years were three times more likely to be infected with malaria while school-age children (6–15 years) were six times more susceptible to malaria infection. This finding corroborates multiple studies in sub-Saharan Africa [17–20] which have reported a shift in malaria infection burden from children under 5 years to school-age children. Participation in routine social activities (e.g. playing outside in the evening) [21] and sleeping less frequently under bed nets as compared to children under 5 and pregnant women have been cited as reasons for this shift [22, 23]. This has important implications for targeting interventions not only to cater for pregnant women and children under 5 but to include the older school-age children as they serve as important reservoirs for sustained malaria transmission [24–27]. From the study, traders and civil servants were less likely to be infected with malaria but farming was significantly associated with increased malaria prevalence. This finding was consistent with a systematic review in sub-Saharan Africa where farming

Table 4 Association between housing characteristics and malaria infection

Housing characteristics	Unadjusted OR (95% CI)		Adjusted OR (95% CI)	
	Odds Ratio	p-value	Odds Ratio	p-value
Roofing Ceiling				
Yes	0.58 (0.44–0.76)	0.000	0.66 (0.44–0.99)	0.042
No	Ref.	–	–	–
Open eaves				
Yes	1.48 (1.16–1.89)	0.002	0.87 (0.61–1.23)	0.430
No	Ref.	–	–	–
Screened doors				
Yes	0.67 (0.54–0.84)	0.000	0.75 (0.57–0.97)	0.032
No	Ref.	–	–	–
Screened windows				
Yes	0.63 (0.50–0.81)	0.000	0.75 (0.56–1.03)	0.075
No	Ref.	–	–	–
Domestic animals in household				
Yes	1.43 (1.12–1.83)	0.004	1.09 (0.83–1.44)	0.520
No	Ref.	–	–	–
Building material				
Mud	1.46 (1.09–1.96)	0.011	1.08 (0.76–1.54)	0.658
Bricks	1.28 (0.96–1.70)	0.089	1.30 (0.95–1.79)	0.101
Cement blocks	Ref.	–	–	–
Roofing Material				
Galvanized roofing sheet	Ref.	–	–	–
Thatch roof	1.66 (0.61–4.52)	0.32	–	–
Staying close to stagnant waters				
Yes	1.46 (1.14–1.86)	0.002	1.34 (1.02–1.77)	0.038
No	Ref.	–	–	–
Staying close to bushes				
Yes	1.29 (1.04–1.60)	0.022	1.04 (0.81–1.33)	0.784
No	Ref.	–	–	–

Bold indicates a statistically significant variable

*Ref-Reference

was associated with increased risk of malaria infection [28]. Farmers tend to be more exposed to infectious bites due to frequent outdoor activities, exposure to swampy stagnant waters, and contact with bushes or vegetation around houses where mosquitoes may be breeding and/or resting [29, 30].

There was no significant association between any of the malaria preventive measures assessed in the study (*i.e.*, ITN usage, IRS, mosquito coil/repellent) and likelihood of malaria infection. Lack of association between bed net usage and malaria prevalence has been reported in Ghana [31] and elsewhere in literature [32–34]. In a recent cross-sectional study using the Ghana Demographic Health and Malaria Indicator Surveys in 2014, 2016 and 2019, the lack of association between ITN usage and malaria infection was attributed to multiple factors including staying outside late at night for socialization,

night schooling, small-scale economic activities or performing household chores before sleeping under nets [31, 35]. Moreover, inconsistent sleeping under bed nets was also attributed to skin irritation, overcrowding, poor ventilation and the lack of airflow in sleeping spaces, especially in slums and rural areas [36, 37]. The lack of association between these preventive measures and malaria infection could also be explained by non-compliance or improper use of ITNs, as well as increased mosquito resistance to chemicals used for IRS and mosquito repellents which have been reported in multiple sites across Ghana [38–43]. However, insecticide resistance status in the study area has not been studied and warrants further investigation. Previous studies in Ethiopia revealed a significant reduction in malaria prevalence among children whose parents were trained on proper usage of ITNs when compared to children whose parents

Table 5 Clinical characteristics of the study population

Clinical symptoms	Total (%)	RDT-positive (%)
History of fever		
Yes	1140 (65.6)	336 (29.5)
No	599 (34.4)	96 (16.0)
Chills		
Yes	699 (40.2)	217 (31.0)
No	1040 (59.8)	215 (20.7)
Muscle aches		
Yes	637 (36.6)	140 (22.0)
No	1102 (63.4)	292 (26.5)
Tiredness		
Yes	663 (38.1)	140 (21.1)
No	1076 (61.9)	292 (27.1)
Nausea		
Yes	604 (34.7)	172 (28.5)
No	1135 (65.3)	260 (22.9)
Vomiting		
Yes	415 (23.9)	164 (39.5)
No	1324 (76.1)	268 (20.2)
Diarrhea		
Yes	196 (11.3)	55 (28.1)
No	1543 (88.7)	377 (24.4)

received no training [44]. Contrary to the findings from this study, other studies in Ghana and Tanzania where proper use of malaria preventive measures such as ITNs, IRS and mosquito repellents were found to be significantly associated with decreased odds of malaria infection [45–47].

The current study showed a strong association between multiple housing characteristics and malaria infection. Housing characteristics such as roofing ceiling, screened doors and windows were significantly associated with decreased risk of malaria infection. This finding corroborates former studies in Ethiopia which reported more than half decrease in malaria infection in screened houses [48]. Screened doors and windows provide mechanical obstruction to prevent mosquitoes from entering houses thus reducing infectious bites. The present study also revealed increased chance of malaria infection among individuals residing in mud houses when compared to those living in houses made of blocks or bricks. This observation was concordant with earlier studies in Uganda where modern housing was significantly associated with decreased odds of malaria infection [49]. Modern housing in the study was described as the use of bricks or blocks as the building material, roofing ceiling, tiled or metal roof and closed eaves. These features provide mechanical barriers that affect entry and

Table 6 Association between clinical characteristics and malaria infection

Clinical symptoms	Unadjusted OR (95% CI)		Adjusted OR (95% CI)	
	Odds Ratio	p-value	Odds Ratio	p-value
History of fever				
Yes	2.19 (1.70–2.82)	0.000	1.29 (0.95–1.74)	0.102
No	Ref.	–	–	–
Chills				
Yes	1.73 (1.39–2.15)	0.000	1.50 (1.15–1.96)	0.003
No	Ref.	–	–	–
Muscle aches				
Yes	0.78 (0.62–0.98)	0.036	1.07 (0.80–1.44)	0.650
No	Ref.	–	–	–
Tiredness				
Yes	0.72 (0.57–0.90)	0.005	0.81 (0.61–1.08)	0.154
No	Ref.	–	–	–
Nausea				
Yes	1.34 (1.07–1.67)	0.011	0.90 (0.67–1.21)	0.493
No	Ref.	–	–	–
Vomiting				
Yes	2.57 (2.03–3.27)	0.000	1.93 (1.43–2.60)	0.000
No	Ref.	–	–	–
Diarrhea				
Yes	1.21 (0.87–1.68)	0.269		
No	Ref.	–		

Bold indicates a statistically significant variable

*Ref-Reference

resting of infectious mosquitoes hence reduce malaria infection. The present study also revealed increased malaria infection among households living close to stagnant water and bushes which favor breeding of infectious mosquitoes. Clearing bushes and proper wastewater management has been reported to be significantly associated with decreased malaria infection [50].

From the study, patients who presented with symptoms such as fever, chills, nausea and vomiting were more likely to be infected with malaria with the exception of tiredness (general weakness) and muscle ache. Fever is a classical symptom of malaria however, it remains a significant challenge to clearly differentiate malarial fevers from other causes of fever [51]. Chills and vomiting are symptoms of mild forms of malaria especially among *Plasmodium falciparum* malaria patients and can progress to severe forms especially among children if not treated [52]. Muscle ache and tiredness are non-specific symptoms and may be caused by other bacterial, viral or fungal pathogens. Differential diagnosis of malaria before treatment is therefore encouraged to interrupt disease transmission in the study area.

Conclusion

This study reports active ongoing malaria transmission in the two rapidly urbanizing areas, highlighting multiple sociodemographic factors (age, occupation), housing characteristics (roofing ceiling, open eaves, screened doors/windows) and clinical symptoms (fever, chills, vomiting) that are significantly associated with infection. Children between 0 and 5 years and those aged from 6 to 15 years were three and six times more likely to be infected with malaria, respectively compared to the > 30 age group. Targeting malaria interventions towards these younger age groups is, therefore, recommended. Moreover, efforts to improve housing characteristics such as installation of roofing ceiling, screening doors, clearing mosquito breeding sites, and intensive education on mosquito preventive measures should be strengthened to reduce malaria transmission in the study area.

Abbreviations

RDT	Rapid Diagnostic Test
IRS	Indoor Residual Spraying
ITN	Insecticide-Treated Net
IQR	Interquartile Range
OR	Odds Ratio
aOR	Adjusted Odds Ratio
AGH	Agona Government Hospital
MGH	Mankranso Government Hospital

Acknowledgements

The authors thank the management and laboratory personnel at Mankranso and Agona Government Hospitals for their warm reception during the study. The authors also appreciate all study subjects including parents/guardians who provided consent to participate in the study.

Author contributions

Conceptualization: SOA, KB, CK; Methodology: SOA, KBA, KB; Validation: KB, EO; Formal analysis: SOA; Investigation: SOA, KBA, A-HM, DAA, AT, TKA, KAA; Data Curation: SOA, KBA, A-HM, DAA, AT, TKA, KAA; Writing—original draft: SOA, KBA; Writing—Review and Editing: SOA, KBA, A-HM, DAA, AT, TKA, KAA, CK, KB, EO; Visualization: SOA; Supervision: KB, CK. All authors reviewed and approved submission of the manuscript.

Funding

The study was supported by the RAPiD VBP project funded by Canada's International Development Research Center (Grant number: 109981-001), and European Union as part of the EDCTP2 Career Development Fellowship (TMA2016CDF1605).

Availability of data and materials

The datasets generated and/or analysed during the current study are available in the Harvard Dataverse repository, <https://doi.org/10.7910/DVN/YH2CX4>.

Declarations

Ethics approval and consent to participate

The study was approved by the Committee on Human Research, Publications and Ethics (Approval number: CHRPE/AP/030/20) of the School of Medicine and Dentistry, KNUST and University of Notre Dame Institutional Review Board (approvals no. 19-08-5511, 19-04-5321). Written informed consent was obtained from patients who were 18 years or older. Parental/guardian consent and child assent were obtained for those under 18 years.

Consent for publication

Not applicable.

Competing interests

The authors declare no competing interests.

Author details

¹Department of Theoretical and Applied Biology, Kwame Nkrumah University of Science and Technology, Kumasi, Ghana. ²Department of Epidemiology and Biostatistics, Fred N. Binka School of Public Health, University of Health and Allied Sciences, Ho, Ghana. ³Department of Biological Sciences, University of Notre Dame, Notre Dame, IN, USA.

Received: 15 June 2024 Accepted: 11 November 2024

Published online: 21 November 2024

References

- WHO. World Malaria Report 2023. Geneva: World Health Organization; 2023.
- Kleinschmidt I, Omumbo J, Briet O, van de Giesen N, Sogoba N, Mensah NK, et al. An empirical malaria distribution map for West Africa. *Trop Med Int Health*. 2001;6:779–86.
- Diouf I, Rodriguez Fonseca B, Caminade C, Thiaw WM, Deme A, Morse AP, et al. Climate variability and malaria over West Africa. *Am J Trop Med Hyg*. 2020;102:1037–47.
- Awine T, Malm K, Bart-Plange C, Silal SP. Towards malaria control and elimination in Ghana. Challenges and decision making tools to guide planning. *Glob Health Action*. 2017;10:1381471.
- US President's Malaria Initiative Ghana. Malaria Operational Plan FY 2024. Accra, Ghana, 2024.
- Ghana Statistical Service. Urbanisation. 2014.
- Ghana Statistical Service. Population of Regions and Districts. In: Ghana 2021 Population and Housing Census, vol. 3A. Accra, Ghana, 2021.
- World Bank Group. Incidence of malaria (per 1000 population at risk)-Ghana [<https://data.worldbank.org/indicator/SH.MLR.INCD.P3?end=2021&locations=GH&start=2000>].
- Brenyah RC, Osakunor DN, Ephraim RK. Factors influencing urban malaria: a comparative study of two communities in the Accra Metropolis. *Afr Health Sci*. 2013;13:992–8.
- Keiser J, Utzinger J, Caldas de Castro M, Smith TA, Tanner M, Singer BH. Urbanization in sub-saharan Africa and implication for malaria control. *Am J Trop Med Hyg*. 2004;71:118–27.
- Ghana Statistical Service. 2010 Population & Housing Census Report: Sekyer South District. Accra, Ghana, 2014.
- Sekyer South District Assembly. Composite Budget for 2022–2025 Programme Based Budget Estimates for 2022.2022.
- Ghana Statistical Service. 2010 Population and Housing Census Report: Ahafo Ano South District. Accra, Ghana, 2014.
- Bartlett JE, Kotlik JW, Higgins CC. Organizational research: determining appropriate sample size in survey research. *Inform Technol Learning Perform J*. 2001;19:43–50.
- Opoku Afriyie S, Addison TK, Gebre Y, Mutala AH, Antwi KB, Abbas DA, et al. Accuracy of diagnosis among clinical malaria patients: comparing microscopy, RDT and a highly sensitive quantitative PCR looking at the implications for submicroscopic infections. *Malar J*. 2023;22:76.
- Ewnetu Y, Badu K, Carlier L, Vera-Arias CA, Troth EV, Mutala AH, et al. A digital microscope for the diagnosis of *Plasmodium falciparum* and *Plasmodium vivax*, including *P. falciparum* with hrp2/hrp3 deletion. *PLoS Glob Public Health*. 2024;4:e0003091.
- Accrombessi M, Akogbeto MC, Dangbenon E, Akpovi H, Sovi A, Yovogan B, et al. Malaria burden and associated risk factors in an area of pyrethroid-resistant vectors in Southern Benin. *Am J Trop Med Hyg*. 2022;107:681–8.
- Mathanga DP, Halliday KE, Jawati M, Verney A, Bauleni A, Sande J, et al. The high burden of malaria in primary school children in Southern Malawi. *Am J Trop Med Hyg*. 2015;93:779–89.
- Makenga G, Menon S, Baraka V, Minja DTR, Nakato S, Delgado-Ratto C, et al. Prevalence of malaria parasitaemia in school-aged children and

- pregnant women in endemic settings of sub-Saharan Africa: a systematic review and meta-analysis. *Parasite Epidemiol Control*. 2020;11:e00188.
20. Nzobo BJ, Ngasala BE, Kihamia CM. Prevalence of asymptomatic malaria infection and use of different malaria control measures among primary school children in Morogoro Municipality. *Tanzania Malar J*. 2015;14:491.
 21. Kihwele F, Gavana T, Makungu C, Msuya HM, Mlacha YP, Govella NJ, et al. Exploring activities and behaviours potentially increases school-age children's vulnerability to malaria infections in south-eastern Tanzania. *Malar J*. 2023;22:293.
 22. Noor AM, Kirui VC, Brooker SJ, Snow RW. The use of insecticide treated nets by age: implications for universal coverage in Africa. *BMC Public Health*. 2009;9:369.
 23. Pinchoff J, Chaponda M, Shields TM, Sichivula J, Muleba M, Mulenga M, et al. Individual and household level risk factors associated with malaria in Nchelenge District, a region with perennial transmission: a serial cross-sectional study from 2012 to 2015. *PLoS ONE*. 2016;11:e0156717.
 24. Walldorf JA, Cohee LM, Coalson JE, Bauleni A, Nkanaunena K, Kapito-Tembo A, et al. School-age children are a reservoir of malaria infection in Malawi. *PLoS ONE*. 2015;10:e0134061.
 25. Cohee LM, Opondo C, Clarke SE, Halliday KE, Cano J, Shipper AG, et al. Preventive malaria treatment among school-aged children in sub-Saharan Africa: a systematic review and meta-analyses. *Lancet Glob Health*. 2020;8:e1499–511.
 26. Staedke SG, Maiteki-Sebuguzi C. Targeting malaria control to schoolchildren. *Lancet Glob Health*. 2023;11:e1156–7.
 27. Cohee LM, Nankabirwa JI, Greenwood B, Djimde A, Mathanga DP. Time for malaria control in school-age children. *Lancet Child Adolesc Health*. 2021;5:537–8.
 28. Degarege A, Fennie K, Degarege D, Chennupati S, Madhivanan P. Improving socioeconomic status may reduce the burden of malaria in sub Saharan Africa: a systematic review and meta-analysis. *PLoS ONE*. 2019;14:e0211205.
 29. Babamale OA, Opeyemi OA, Bukky AA, Musleem AI, Kelani EO, Okhian BJ, et al. Association between farming activities and *Plasmodium falciparum* transmission in rural communities in Nigeria. *Malays J Med Sci*. 2020;27:105–16.
 30. Janko MM, Irish SR, Reich BJ, Peterson M, Doctor SM, Mwandagalirwa MK, et al. The links between agriculture, Anopheles mosquitoes, and malaria risk in children younger than 5 years in the Democratic Republic of the Congo: a population-based, cross-sectional, spatial study. *Lancet Planet Health*. 2018;2:e74–82.
 31. Tetteh J, Yorke E, Boima V, Yawson AE. Prevalence of malaria infection and the impact of mosquito bed net distribution among children aged 6–59 months in Ghana: evidence from the Ghana demographic health and malaria indicator surveys. *Parasite Epidemiol Control*. 2023;21:e00302.
 32. Arikawa S, Tchankoni MK, Gbeasor-Komlanvi FA, Atekpe SP, Atcha-Oubou T, Figueroa-Romero A, et al. Prevalence and risk factors associated with malaria infection in children under two years of age in southern Togo prior to perennial malaria chemoprevention implementation. *Malar J*. 2023;22:357.
 33. Steinhardt LC, Jean YS, Impoinvil D, Mace KE, Wiegand R, Huber CS, et al. Effectiveness of insecticide-treated bednets in malaria prevention in Haiti: a case-control study. *Lancet Glob Health*. 2017;5:e96–103.
 34. Okunlola OA, Oyeyemi OT, Lukman AF. Modeling the relationship between malaria prevalence and insecticide-treated bed net coverage in Nigeria using a Bayesian spatial generalized linear mixed model with a Leroux prior. *Epidemiol Health*. 2021;43:e2021041.
 35. Monroe A, Asamoah O, Lam Y, Koenker H, Psychas P, Lynch M, et al. Outdoor-sleeping and other night-time activities in northern Ghana: implications for residual transmission and malaria prevention. *Malar J*. 2015;14:35.
 36. Ahorlu CS, Adongo P, Koenker H, Zigirumugabe S, Sika-Bright S, Koka E, et al. Understanding the gap between access and use: a qualitative study on barriers and facilitators to insecticide-treated net use in Ghana. *Malar J*. 2019;18:417.
 37. Awuku SK, Wang D. The effects of structural design on ventilation of buildings in Ghana and its effect on transmission of infectious diseases. *Open Access Library J*. 2020;7:e6842.
 38. Hunt RH, Fuseini G, Knowles S, Stiles-Ocran J, Verster R, Kaiser ML, et al. Insecticide resistance in malaria vector mosquitoes at four localities in Ghana. *West Africa Parasit Vectors*. 2011;4:107.
 39. Hogarh JN, Antwi-Agyei P, Obiri-Danso K. Application of mosquito repellent coils and associated self-reported health issues in Ghana. *Malar J*. 2016;15:61.
 40. Baffour-Awuah S, Annan AA, Maiga-Ascofare O, Dieudonne SD, Adjei-Kusi P, Owusu-Dabo E, et al. Insecticide resistance in malaria vectors in Kumasi, Ghana. *Parasit Vectors*. 2016;9:633.
 41. Pwalia R, Joannides J, Iddrisu A, Addae C, Acquah-Baidoo D, Obuobi D, et al. High insecticide resistance intensity of *Anopheles gambiae* (s.l.) and low efficacy of pyrethroid LLINs in Accra, Ghana. *Parasit Vectors*. 2019;12:299.
 42. Hamid-Adiamoh M, Amambua-Ngwa A, Nwakanma D, D'Alessandro U, Awandare GA, Afrane YA. Insecticide resistance in indoor and outdoor-resting *Anopheles gambiae* in Northern Ghana. *Malar J*. 2020;19:314.
 43. Akuamoah-Boateng Y, Brenyah RC, Kwarteng SA, Obuam P, Owusu-Frimpong I, Agyapong AK, et al. Malaria transmission, vector diversity, and insecticide resistance at a peri-urban site in the forest zone of Ghana. *Front Trop Dis*. 2021;2:739771.
 44. Deribew A, Birhanu Z, Sena L, Dejene T, Reda AA, Sudhakar M, et al. The effect of household heads training on long-lasting insecticide-treated bed nets utilization: a cluster randomized controlled trial in Ethiopia. *Malar J*. 2012;11:99.
 45. Afoakwah C, Deng X, Onur I. Malaria infection among children under-five: the use of large-scale interventions in Ghana. *BMC Public Health*. 2018;18:536.
 46. Dwumfour CK, Bam VB, Owusu LB, Poku CA, Kpabitey RD, Aboagye P, Ibrahim AS. Prevalence and determinants of malaria infection among pregnant women attending antenatal clinic in Ejisu government hospital in Ghana: a cross-sectional study. *PLoS ONE*. 2023;18:e0293420.
 47. Winskill P, Rowland M, Mtove G, Malima RC, Kirby MJ. Malaria risk factors in north-east Tanzania. *Malar J*. 2011;10:98.
 48. Getawen SK, Ashine T, Massebo F, Woldeyes D, Lindtjorn B. Exploring the impact of house screening intervention on entomological indices and incidence of malaria in Arba Minch town, southwest Ethiopia: a randomized control trial. *Acta Trop*. 2018;181:84–94.
 49. Wanzirah H, Tusting LS, Arinaitwe E, Katureebe A, Maxwell K, Rek J, et al. Mind the gap: house structure and the risk of malaria in Uganda. *PLoS ONE*. 2015;10:e0117396.
 50. Minawati AD, Ramadhani DNAM, Damayanti S, Ariska YGE, Murti B, Handayani AF. Effects of insecticide-treated nets and stagnant water on the risk of malaria: a meta-analysis. *J Epidemiol Public Health*. 2023;8:362–74.
 51. Basu S, Sahi PK. Malaria: an update. *Indian J Pediatr*. 2017;84:521–8.
 52. López Del Prado GR, Hernán García C, Moreno Cea L, Fernández Espinilla V, Muñoz Moreno MF, Delgado Márquez A, et al. Malaria in developing countries. *J Infect Dev Ctries*. 2014;8:1–4.

Publisher's Note

Springer Nature remains neutral with regard to jurisdictional claims in published maps and institutional affiliations.